

Product Information

KU 100

Dummy Head





The KU 100 dummy head is a binaural stereo microphone. It resembles the human head and has two microphone capsules built into the ears. When listening through high-quality headphones it gives the illusion of being right at the scene of the acoustic events.

When using the KU 100 dummy head, the binaural stereo experience moves the listener into the scene of the original performance, in contrast to other space-related recording techniques, where the acoustic event is moved to the listener.

The dummy head is also used in many industrial applications as a measuring device, for example in acoustic research.

The KU 100 can be operated with typical 48 V phantom powering, or from an external power supply unit, or from the built-in battery.

At the bottom of the unit is a switch for the different power supply modes, as well as connectors for balanced and unbalanced output signals.

Inside the head are additional switches for 10 dB attenuation and the high-pass filter.

The Idea

The KU 100 dummy head is a replica of the human head with a microphone built into each ear.

When the recorded audio signal is reproduced through high-quality headphones the listener perceives a sound image almost identical to the one he would have heard at the recording location of the dummy head (head-related stereophony).

When played back through loudspeakers, the sound matches to a high degree that of conventional stereo microphones, placed in the same position. However, a superior quality is added, that of a distinct spatial depth perception.



Features

- Dummy head for head-related stereophony
- Pressure transducer with flat diffuse-field frequency response
- Loudspeaker compatible
- Transformerless circuitry
- Two-stage switchable low frequency roll-off
- Switchable 10 dB preattenuation
- Balanced and unbalanced outputs (XLR and BNC)

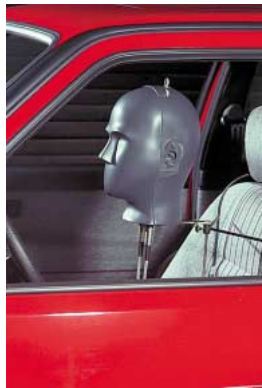
KU 100

Dummy Head

The KU 100 dummy head is just as easy to use during creative radio drama productions, and music recordings where the room acoustics should be recorded at the same time.

The dummy head is also contributed essentially as an important tool to preserve natural sounds of all kinds.

In addition, the dummy head is frequently used to examine and document the influence of noise in industrial applications at various working places under realistic conditions.



Electrical features

The KU 100 uses transformerless circuitry with the advantage of high output capability, fast transient response, and extremely low self noise. The usual output transformers are replaced by electronic circuits. As with traditional transformers, this technique ensures good common mode rejection, and prevents RF interference, that may influence the balanced audio signals.

The dummy head provides balanced (XLR) and unbalanced (BNC) outputs. It can be powered in three different modes:

from an external P 48 phantom power supply,

with batteries as part of the internal battery supply,

or from an external AC mains supply (included with the system).



Filter and attenuation

A 10 dB switch inside the head attenuates the sensitivity. A second switch selects the cutoff frequency of the high-pass filter to be either linear, 40 Hz, or 150 Hz.



Delivery range

The KU 100 comes in a robust aluminum carrying case, together with an external power supply unit, a 5-pin XLR cable, and an adapter cable that splits the 5-pin XLR output into two 3-pin XLR connectors.



Technical Data

Acoustical operating principle	Pressure transducer	Maximum SPL for THD 0.5%	135 dB
Directional pattern	Ear	Maximum SPL for THD 0.5% with preattenuation	145 dB
Frequency range	20 Hz...20 kHz	Maximum output voltage	1950 mV
Sensitivity at 1 kHz into 1 kohm	20 mV/Pa	Dynamic range of the microphone amplifier DIN/IEC 651	119 dB
Rated impedance	50 ohms balanced 200 ohms unbalanced	Supply voltage	200 ... 240 V / 48 V ± 4 V / 6 x 1,5 V
Rated load impedance	1000 ohms	Current consumption	2 x 2 mA, P 48
Equivalent SPL CCIR 468-3	29 dB	Matching connector	XLR 3F
Equivalent SPL DIN/IEC 651	16 dB-A	Weight	3500 g
S/N ratio CCIR 468-3	65 dB	Height	280 mm
S/N ratio DIN/IEC 651	78 dB	Width	180 mm
		Depth	220 mm



Application Hints

- Radio drama productions
- Live concert recordings in complex acoustic environments
- Documentation of
 - nature's sound,
 - theater,
 - round table discussions
- Documentation and measurement of
 - room acoustics,
 - PA systems,
 - stereo sound inside an automobile,
 - musical instruments
- Analysis of
 - noise,
 - speech intelligibility,
 - headphone performance

These are just some of the most common applications. We recommend additional experimentation to gain maximum use from this microphone.

Delivery Range

Dummy head KU 100
 Microphone cable IC 5
 Adapter cable AC 20
 Plug-in mains unit
 Aluminium case

Catalog No.

KU 100 (230 V) blk 07130
 KU 100 (117 V) blk 07132

Selection of Accessories

Windscreen, WSB blk 07372

A complete survey and detailed descriptions of all accessories are contained in the accessories catalog.

Meaning of color codes:
 blk = black
 ni = nickel

