



The Model 513 Filter is a sharp cutoff, high pass filter with severe attenuation of frequencies below 100 cps, as shown in Figure 1.

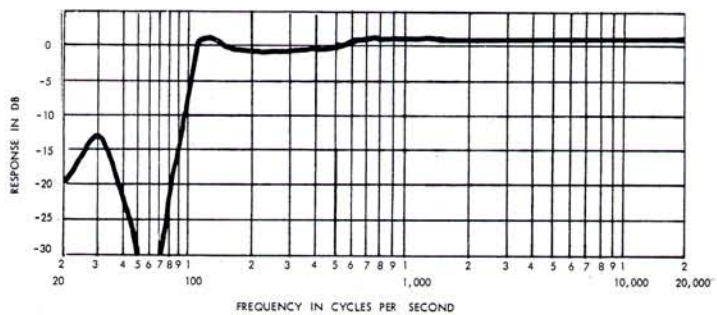
Designed to be used in line between a microphone and preamplifier, the Model 513 rejects unwanted noise and reverberation components below 100 cps. Maximum attenuation occurs at 60 cps (over 30 db) reducing pickup of acoustic A.C. machinery noise.

The Model 513 is designed for use with low impedance microphones (50, 150, and 250 ohms) and its input impedance must be adjusted to equal the microphone's impedance. An external switch is provided for this purpose. The "off" position on this switch connects the filter input directly to the output by-passing the filter.

**SPECIFICATIONS**

Controls:	on-off impedance
Hum Pickup:	less than -120 dbm for .001 gauss field
Cutoff Frequency:	100 cps
Insertion Loss:	less than 0.5 db
Maximum input level:	-20 dbm
Attenuation at 60 cps:	30 db minimum
Impedance Taps:	50, 150, 250 ohms
Weight:	1 lb.10 oz.
Dimensions:	2-1/4" diam., 5-5/8" long including cable clamps

FIGURE 1 FREQUENCY RESPONSE MODEL 513 HIGH PASS FILTER



**INSTALLATION**

Remove screws holding cable clamp plate and remove plate from housing.

Loosen cable clamp screws and insert cable through clamps. Wire cables to terminal board according to wiring diagram. Install cable clamp plate and tighten cable clamp screws.

**IMPORTANT:** Adjust impedance switch to match the impedance of the microphone.

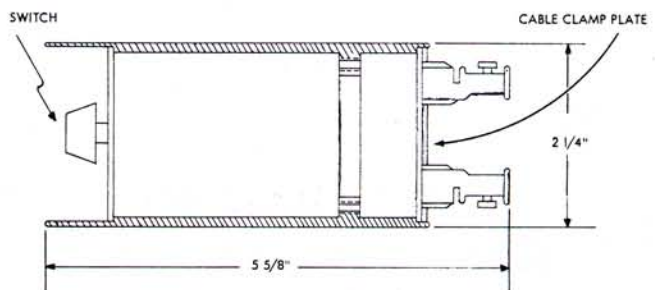
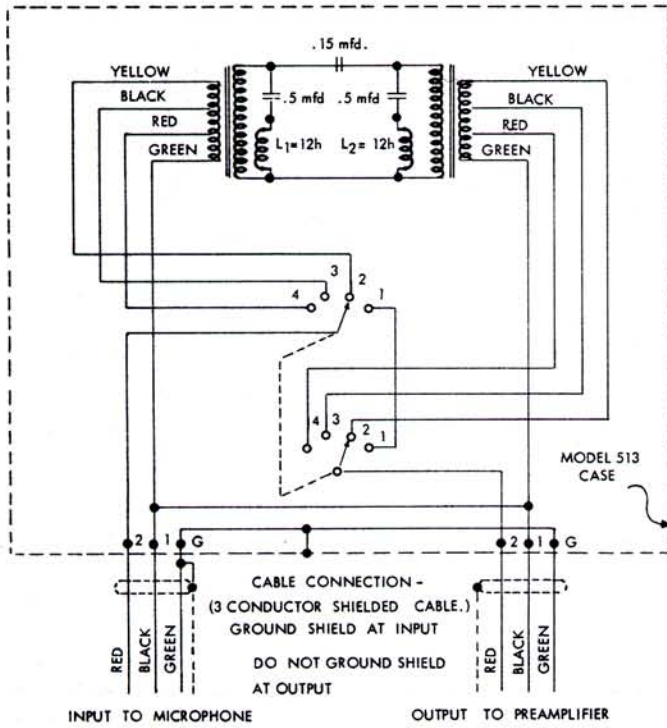
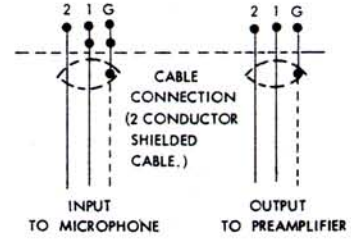


Figure 2



SCHMATIC DIAGRAM

B1



Switch Positions

- 1 - Off
- 2 - 250 ohm microphone
- 3 - 150 ohm microphone
- 4 - 50 ohm microphone

**Ey** ELECTRO-VOICE, INC. / BUCHANAN, MICHIGAN

Part No. 53998

Printed in U.S.A.